

# EcoTransIT World Initiative

An industry driven success story

Dipl.-Ing. Ralph Anthes

IVE mbH



# EcoTransIT World Initiative

## The impulse

---

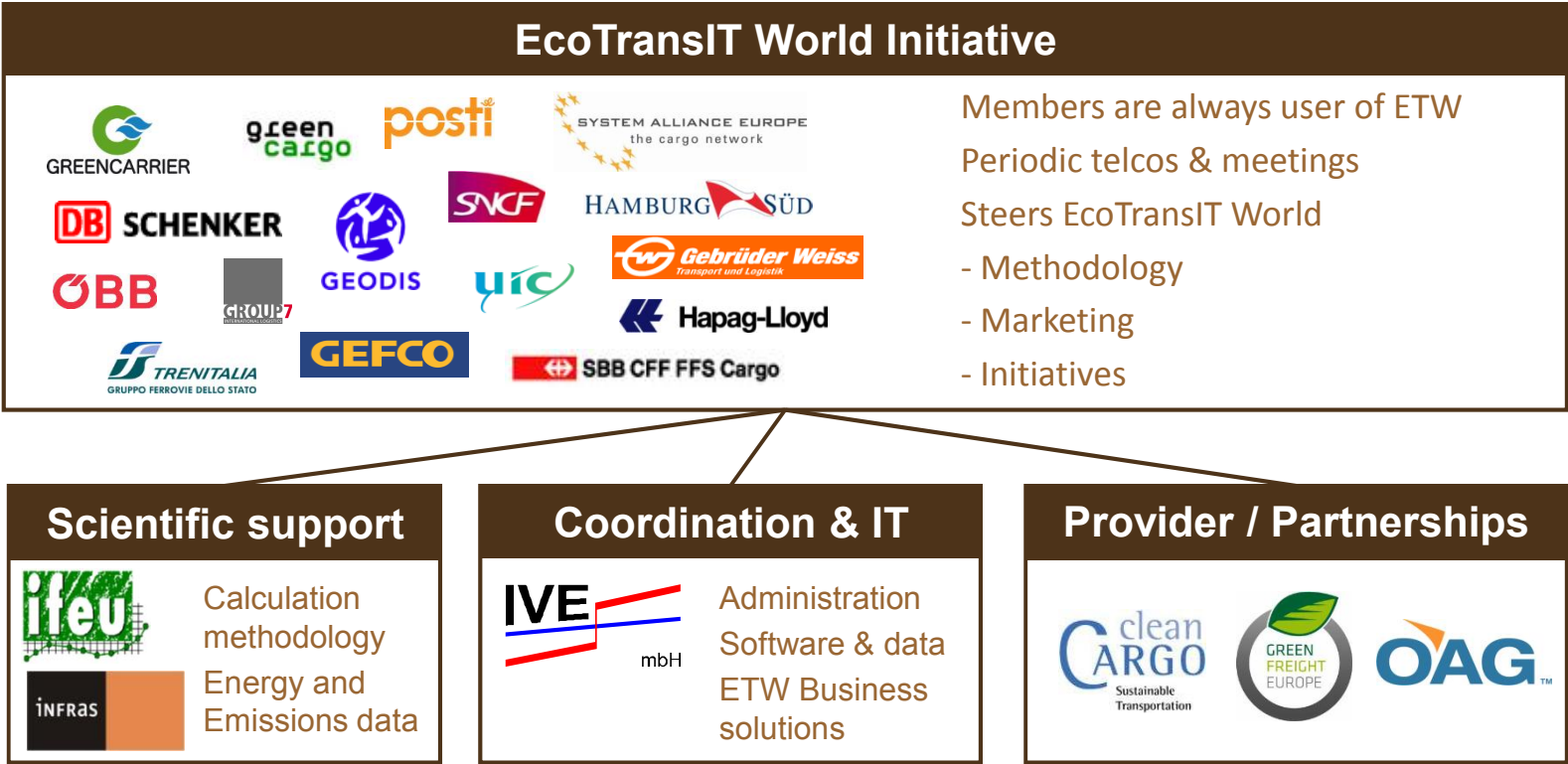
**You can only reduce what you can measure**

Do not invent the wheel twice and try  
to use proven methodologies to create comparable results

The companies within the EWI **work together** to align their  
emission calculation

# EcoTransIT World Initiative

## Constitution



# EcoTransIT World

## Evolving process

---

- 1998 Start of work
- 2003 First EcoTransIT version for comparison of European freight transports
- 2006 Introduction of GIS-based routing
- 2008 Release of first business solution
- 2010 Launch of EcoTransIT World (ETW)
- 2012 EcoTransIT World Initiative (EWI)
- 2013 EN 16258 compliance
- 2014 Inclusion of CCWG and OAG flight data

# EcoTransIT World

## Benefits – Why companies are using the tool

Global	Provides energy consumption, greenhouse gas and exhaust emissions of any global transport chain free of charge
Intermodal	Includes all transport modes in a consistent way (truck, rail, air, sea, inland water way)
GIS-based	Supports ex-ante assessment through automatic routing function and GIS based networks and destinations
Reliable	Proven public methodology and default data developed and regularly updated by independent scientific institutions
Flexible	Ready to integrate individual data ( e.g. fuel consumption, etc.) and features in customized 'Business Solution'
Compliant	Compliant with international standards (e.g. EN 16258)
Ready	Standard Interfaces of the 'Business Solutions' covers already now most of the requested issues of interested customers
Full service	All 'Business Solutions' validated by our scientific partners Ifeu, Infras and IVE

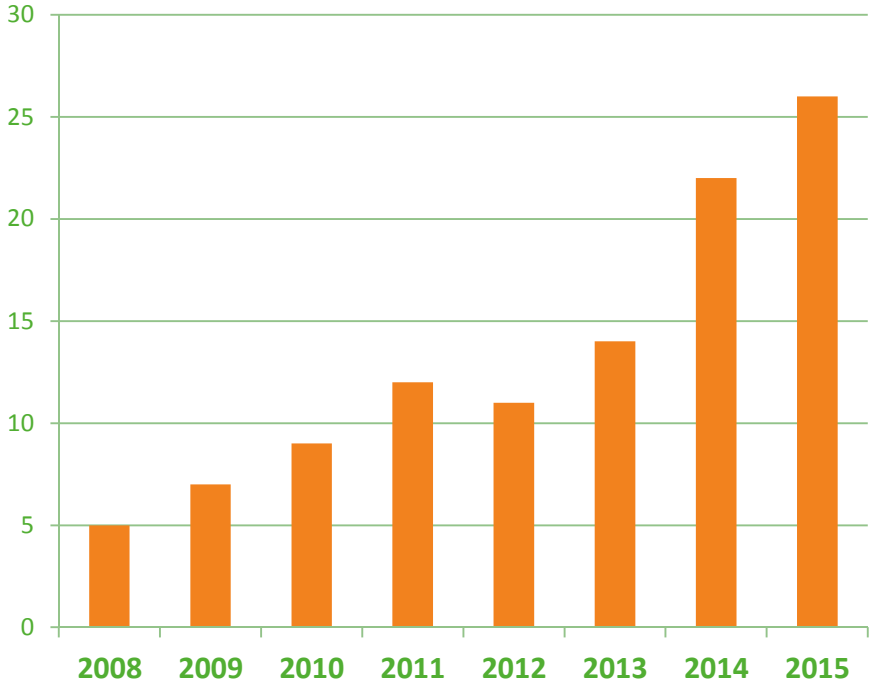


# Business solution

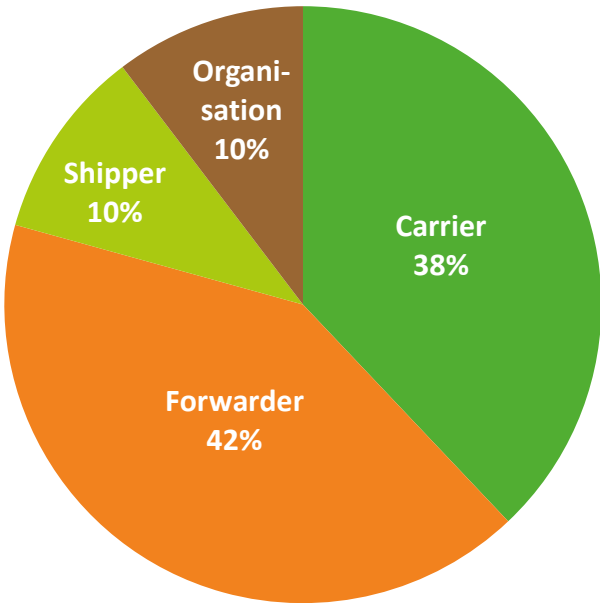
## Users

---

Number of ETW users



User Structure

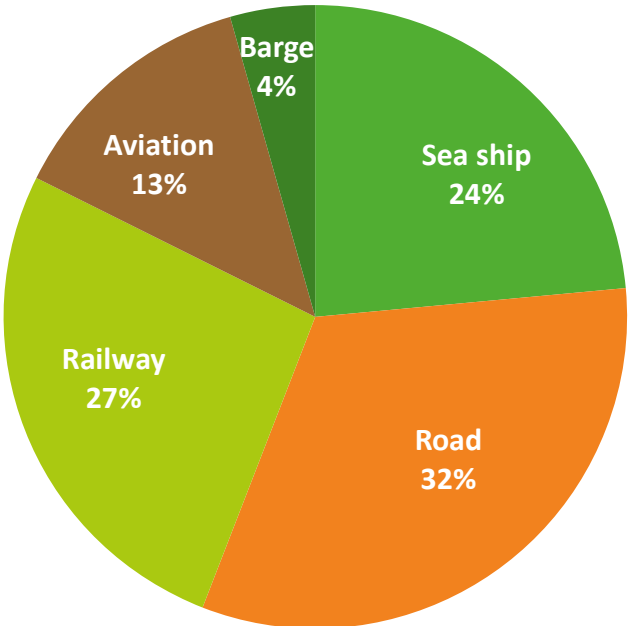


# Business Solution

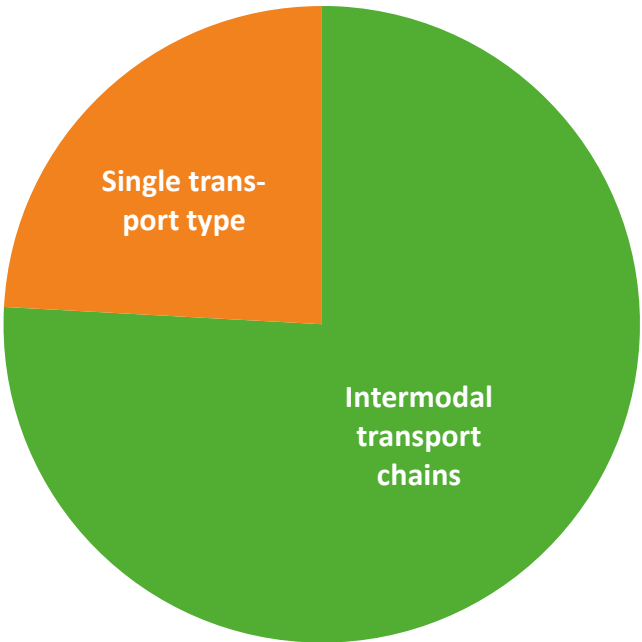
## Calculation classification

---

### Calculated Transport Types



### Intermodal usage



# EcoTransIT World Initiative

What we created...

---

## Aligned emission accounting...

The base of all calculations is a scientific founded, transparent and public available methodology provided by independent institutes.

Every user calculates with the same EcoTransIT World accounting module for trustable and comparable results!

EcoTransIT World has the flexibility to consider company specific values or characteristics



# EcoTransIT World Initiative

What we want...

---

...joined action!

All companies within the EcoTransIT World Initiative decides together the direction of the tool (without being political) on the base of common budget

EWI works together and the companies calculate individual on the same base

# EcoTransIT World Initiative

What we do...

---

## The pathway to united carbon reductions in global transports

ETW is a living tool! The budget of EWI enables regular updates of the methodology and tool

EWI communicates with initiatives and networks like GLEC or CCWG and having the aim to use and support broadly accepted standards

EWI and ETW is an industry driven success story

# EcoTransIT World Initiative

Stakeholder Workshop, 18<sup>th</sup> Nov 2015, Gothenburg

---

The companies within the EWI **work together** to align their emission calculation

**I wish you a successful workshop!**